

Monday Quotes



Grain

“The doctrine of the Incarnation is itself an invitation to all believers to love the earth, cherish it, find the divine in it.” –Matthew Fox

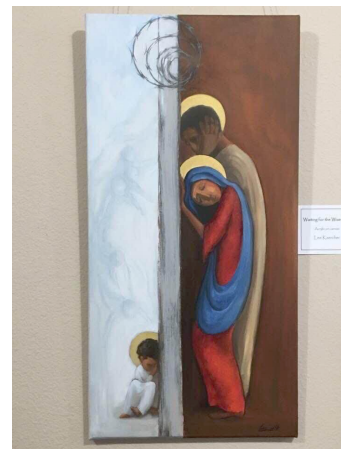
Field

15 When the angels had left them and gone into heaven, the shepherds said to one another, "Let us go now to Bethlehem and see this thing that has taken place, which the Lord has made known to us." 16 So they went with haste and found Mary and Joseph, and the child lying in the manger. 17 When they saw this, they made known what had been told them about this child; 18 and all who heard it were amazed at what the shepherds told them. 19 But Mary treasured all these words and pondered them in her heart. 20 The shepherds returned, glorifying and praising God for all they had heard and seen, as it had been told them. Luke 1:15-20

Thoughts



A globular cluster of stars (Messier 12 / NGC 6218)
Public domain NASA and European Space Agency photograph



Robert Frank Gabriel



Christmas Eve 1968 (NASA & W. Anders)



In the stories about Jesus' birth, Christ is so close and also cosmic. Jesus was accessible to anyone who journeyed to Bethlehem, during one of the most politically charged times in Middle Eastern history. Shepherds traveled with eyes directed upward, carried far beyond their own thoughts. Those who cared more about power than love would be revealed as living only in a shadow of reality. Mary and Joseph would soon be on the run, concerned and in wonder. Immersed in our own struggles and disturbing political climate, let us journey to Bethlehem. Have a blessed Christmas! Happy Monday!

Share

Send any quotes you'd like to share with our network to cindyc@loppw.org

All Monday Quotes found under the Resources & Advocacy Tools tab at www.loppw.org

Many Blessings upon you,

Pastor Cindy Crane